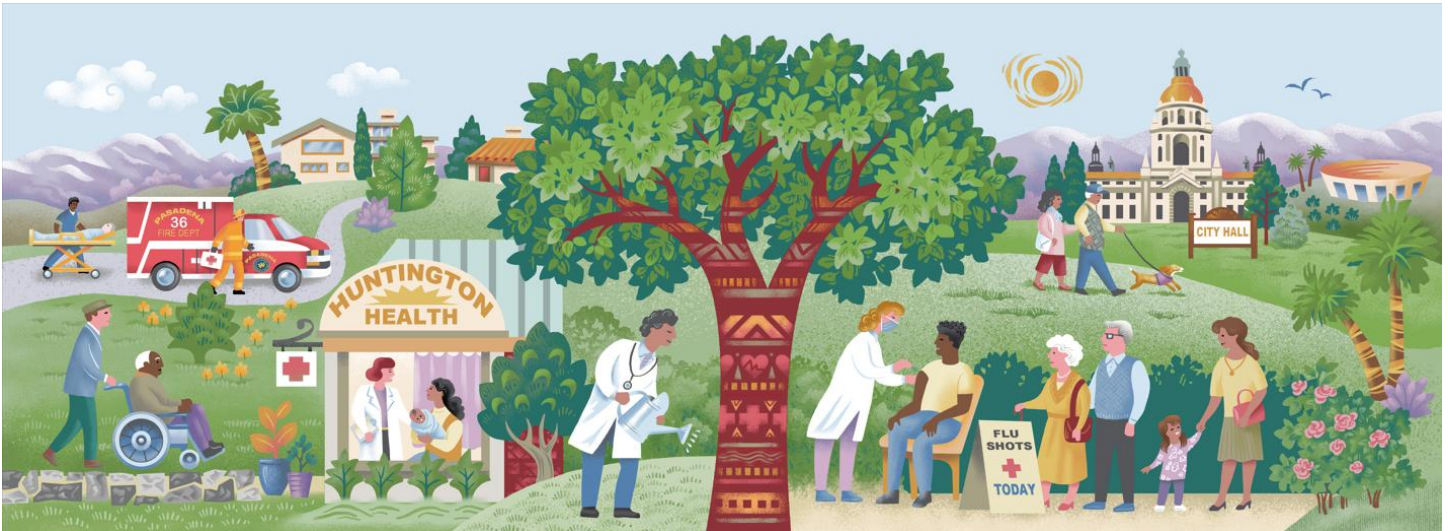




Huntington[®]
Health

An Affiliate of
 Cedars
Sinai



Huntington Health Community Benefit Implementation Strategy FY 2026 - 2028

Approved by the Board of Directors:
11-13-2025

Huntington Health’s Community Benefit health focus areas and strategies are based on the 2025 Community Health Needs Assessment (CHNA), as required by state and federal regulations guiding tax-exempt hospitals. Access to Care, Chronic Disease, and Housing & Homelessness emerged as the predominant health focus areas for the FY 2026-2028 Implementation Strategy. The CHNA includes an analysis of input from community stakeholders who represent the broad interests of the diverse communities served by the hospital, including those stakeholders with expertise in community and public health. The CHNA incorporates existing demographic and health indicator data from the hospital’s entire service area.

Health needs were identified in the CHNA and prioritized by community stakeholders. From the prioritized health needs, Huntington Health chose Health Focus Areas, taking into account the hospital’s capacity to impact community needs, the strength of community partnerships, and the alignment with organizational strategic planning efforts.

Health Focus Areas

Access to Care: Community Benefit efforts focus on supporting access to healthcare for under-resourced communities through direct programs and partnerships with local community-based organizations. Programs and strategies include the following access to care priority health needs: **Behavioral Health (mental health and substance use/misuse), Older Adult Health and Preventive Care.**

Chronic Disease: Community Benefit efforts focus on health promotion, education and prevention of chronic health conditions and their underlying risk factors. Programs and strategies include a focus on **Overweight and Obesity.**

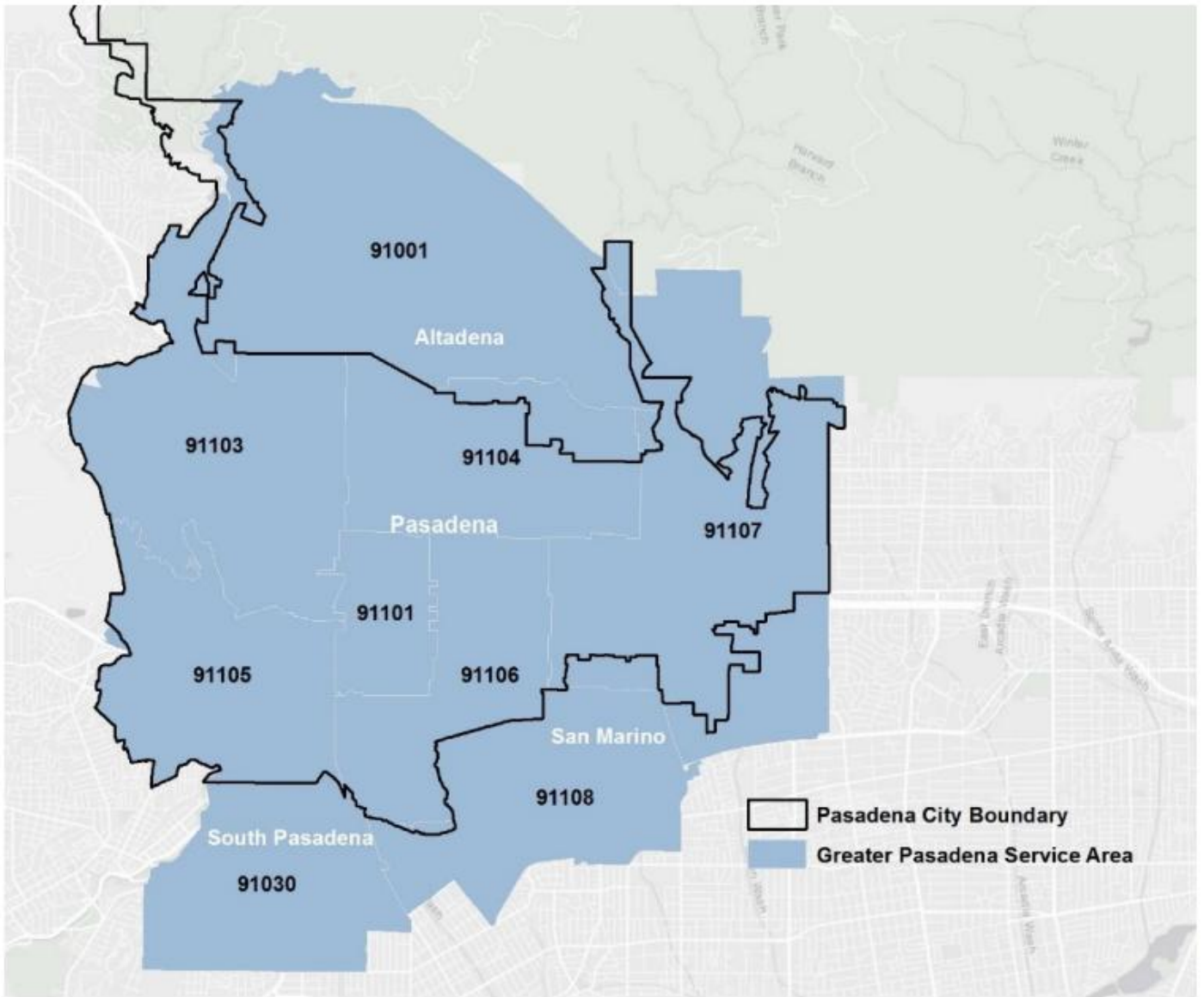
Housing & Homelessness: Community Benefit efforts focus on connecting people experiencing homelessness to community-based programs and services, as well as building strategies to improve the health and housing stability of people experiencing homelessness

Report Adoption, Availability and Comments

This Implementation Strategy was adopted by the Huntington Health Board of Directors on November 13, 2025. This report and other Community Benefit documents are widely available to the public on the hospital’s web site. The published documents and a contact form for sending comments and feedback about the CHNA and Implementation Strategy can be accessed [here](#).

Huntington Health Service Area

The hospital is located at 100 W. California Blvd. Pasadena, CA 91105. The service area is the Greater Pasadena area, which is defined by nine ZIP codes (91103, 91105, 91030, 91101, 91001, 91104, 91106, 91108, and 91107) and is located in Service Planning Area (SPA) 3 of Los Angeles County.



Access to Care, including

Behavioral Health (mental health and substance use/misuse), Older Adult Health and Preventive Care.

Goal: Increase access to healthcare services that improve the health of historically marginalized and under-resourced individuals in our community.

Anticipated Impact: Increased availability and access to healthcare services, especially for older adults, including behavioral healthcare and education and preventive care.

Evaluation: Programs and strategies will be evaluated through ongoing data-collection and reporting.

Access to Care Programs and Strategies
<p>Financial assistance and enrollment assistance Provide financial assistance through free and discounted care and government health programs for low-income patients for health care services, consistent with the hospital’s financial assistance policy; and offer health insurance information and enrollment assistance in partnership with Cedars-Sinai Health System.</p>
<p>Social work/case management Huntington Health will continue to facilitate access to preventive care, primary care, outpatient care and resources and referrals for health-related social needs for under-resourced patients.</p>
<p>Social drivers of health screening and referral Huntington Health will continue to screen patients for health-related social needs and will continue to use the electronic community resource referral platform powered by FindHelp to navigate patients to needed community services.</p>
<p>Ambulatory Care Clinic Provide primary and specialty care for uninsured and underinsured community members through the Huntington Ambulatory Care Clinic (HACC). Provide pop-up community medical clinics with follow-up at HACC as appropriate. Explore creation of an LGBTQ+ clinic as a component of HACC.</p>
<p>Senior Care Network With 30 staff members, volunteers and students, Huntington Health’s Senior Care Network helps 15,000 community members annually, with aging in place and living safely in their homes. Comprised mainly of social workers and public health nurses, Senior Care Network team provides our community with the following programs, resources and support: 50+ Health Connection , Noon Hour Events, Assisted Living Waiver Program (ALW), Caregiver Support, Multipurpose Senior Services Program (MSSP), Resource Center and Senior CareLine.</p>
<p>Community Health Workers Two full-time Community Health Workers (CHWs) support vulnerable patients with multiple unmet social needs and difficulty navigating care and community-based resources. The CHWs provide public benefits enrollment assistance and navigation and community-based referrals.</p>
<p>Transportation and prescription medication support Provide transportation support for patients who cannot access health services because of lack of transportation. And provide discounted or free prescription medications for patients who were unable to afford the cost of their medications.</p>
<p>Health screenings Registered nurses, fluent in English and Spanish, conduct free health screenings and counseling at community locations.</p>

Access to Care Programs and Strategies

Vaccines

Provide free flu vaccines at community locations.

PORT Team

The Pasadena Outreach Response Team (PORT) is a joint effort of the City of Pasadena Public Health and Fire Departments, and Union Station Homeless Services. The program provides field-based healthcare support and advocacy for people who are experiencing homelessness, living with chronic health conditions, and diagnosed with mental health and/or substance use disorders. Additionally, PORT provides field-based health screenings and administers flu vaccines and HIV testing. Huntington Hospital will provide a registered nurse to assist the program. Huntington Health Emergency Room physicians support care for people experiencing homelessness through phone consultation.

Community support

Provide cash and in-kind donations to nonprofit community organizations dedicated to increasing access to health care.

Access to Care and Community Services Community Partners

City of Pasadena Fire Department, City of Pasadena Public Health Department, Community centers, Community clinics, Community-based organizations, Faith-based organizations, Pasadena Public Libraries, Schools and school districts, Senior Centers, Union Station Homeless Services

Chronic Disease, including a focus on Overweight & Obesity

Goal: Increase access to community-based chronic disease-related services, treatment and education that improve the health of historically marginalized and under-resourced individuals in our community.

Anticipated Impact: Increased availability and access to preventive care, education and supportive services that address chronic diseases.

Evaluation: Programs and strategies will be evaluated through ongoing data-collection and reporting.

Chronic Disease Programs and Strategies

Chronic disease screening

Registered nurses, fluent in English and Spanish, conduct free health screenings and counseling at community locations.

Diabetes Empowerment and Education Program (D.E.E.P.)

Provide a six-week diabetes management program, offered in English and Spanish, for persons with Type II diabetes.

Support groups

Host support groups for persons with chronic diseases, including nutrition/weight management, and their caregivers.

Cancer Center Offer education and support groups helping persons with cancer and their families. Cancer navigators, who are nurses, dietitians, and social workers, help coordinate cancer services. A licensed

Chronic Disease Programs and Strategies

cosmetologist at the Constance G. Zahorik Appearance Center at Huntington Hospital will help clients manage the cosmetic side effects of cancer treatment.

Community outreach, health education and exercise classes

Conduct community outreach programs to provide information, education and resources, and raise awareness about chronic disease prevention and management. Provide community exercise programs.

Senior Care Network

Assist older adults and adults with disabilities and their families to remain healthy and independent and live safely in their homes. A community-based team responds to phone inquiries from the general public, provides educational lectures, and distributes Health Connection Newsletters, which contain information and advice on aging and disease management.

Food for All

Huntington Hospital is a member of the Food for All San Gabriel Valley Initiative. Initiate food insecurity screening with patients and use a Social Determinates of Health platform to connect at-risk patients with patient navigators who are located at food agency partners.

PORT Team

The Pasadena Outreach Response Team (PORT) is a joint effort of the City of Pasadena Public Health and Fire Departments, and Union Station Homeless Services. The program provides field-based healthcare support and advocacy for people who are experiencing homelessness, living with chronic health conditions, and diagnosed with mental health and/or substance use disorders. Additionally, PORT provides field-based health screenings and administers flu vaccines and HIV testing. Huntington Hospital will provide a registered nurse to assist the program. Huntington Health Emergency Room physicians support care for people experiencing homelessness through phone consultation.

Community support

Provide cash and in-kind donations to nonprofit community organizations dedicated to address chronic diseases and increase access to healthy eating and active living.

School-based partnerships

School based partnerships including assisting with student vaccine clinic, referrals to an HH dietitian for obesity and nutrition education.

Chronic Disease Community Partners

City of Pasadena Public Health Department, Community centers, Community clinics, Community-based organizations, Faith-based organizations, Farmers markets, Food for All partners, Pasadena Public Libraries, schools and school districts, and Senior Centers.

Housing & Homelessness

Goal: Improve health and community service navigation for people experiencing homelessness.

Anticipated Impact: Increased availability and access to community-based services and supports that address the needs of people experiencing homelessness.

Evaluation: Programs and strategies will be evaluated through ongoing data-collection and reporting.

Housing & Homelessness Programs and Strategies
<p>Social work/case management</p> <p>Huntington Health will continue to facilitate access to preventive care, primary care and outpatient care, with special attention to connecting patients experiencing homelessness with specialized services that meet the needs of that population.</p>
<p>Social drivers of health screening and referral</p> <p>Huntington Health will continue to screen patients for housing insecurity and will continue to use the community resource referral platform powered by FindHelp to navigate patients to needed community services. This platform is widely available to the public through our hospital, ensuring individuals can access it at any time for self-referral.</p>
<p>Care transitions and patient support</p> <p>Huntington Health will continue to fund care transitions for patients experiencing homelessness, for example, recuperative care and psychiatric hospitalizations. Additionally, Huntington Health will continue to supply clothing, medications, durable medical equipment and transportation for patients in need.</p>
<p>PORT Team</p> <p>The Pasadena Outreach Response Team (PORT) is a joint effort of the City of Pasadena Public Health and Fire Departments, and Union Station Homeless Services. The program provides field-based healthcare support and advocacy for people who are experiencing homelessness, living with chronic health conditions, and diagnosed with mental health and/or substance use disorders. Additionally, PORT provides field-based health screenings and administers flu vaccines and HIV testing. Huntington Hospital will provide a registered nurse to assist the program. Huntington Health Emergency Room physicians support care for people experiencing homelessness through phone consultation.</p>
<p>Community support (grants and in-kind)</p> <p>Provide cash and in-kind donations to nonprofit community organizations dedicated to address housing and homelessness.</p>
Housing & Homelessness Community Partners
<p>City of Pasadena, City of Pasadena Fire Departments, City of Pasadena Public Health, Community-based organizations, Faith-based organizations, Friends In Deed, Homeless and housing agencies, Pasadena Continuum of Care Network, Project RoomKey, Union Station Homeless Services.</p>

Health Needs the Hospital Will Not Address

There were significant health needs identified in the CHNA that did not meet the criteria for developing and implementing a health focus area and, as a result, are not addressed in this Implementation Strategy. This is not intended to minimize the importance of those health needs and does not preclude Huntington Health from potential efforts and investments in these issue areas as response to emerging needs in the community. The health needs identified in the CHNA but not included in the health focus areas for this Implementation Strategy are: community safety and economic insecurity. Huntington Health will continue to develop partnerships and seek opportunities to address community needs where we can make a meaningful contribution.